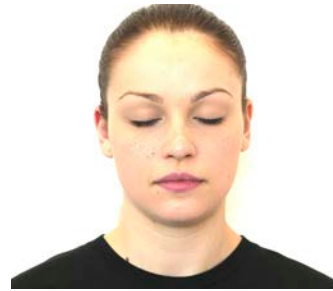


How to apply STAGE MAKEUP by KAYLA WALLACE



STEP BY STEP

STEP 1 - Apply foundation all over face with concealer under your eyes.

STEP 2 - Apply a really light brown or champagne colour eye shadow all over the eyelid. And a slightly darker brown on the outer side of your eyelid, coming into the centre.

STEP 3 - Apply a black or dark brown eyeliner along the top of upper lid, creating a small wing slightly upwards, and eye liner right along the lower lash line, coming in just past the pupil. Also in this step, I filled in my eyebrows with a light brown eyeshadow.

STEP 4 - Apply mascara on the top and bottom lashes, I like to do an extra coat on the top lashes.

STEP 5 - Apply blush on the apples of your cheeks, and slightly upwards towards your temples.

Also in this step, I added red lipstick, and highlighting eye shadow.

For highlighting eye shadow use a white or light pink/champagne colour in the inner corner of your eye, and right below the wing on the outer corner.

bostondance

www.bostondanceco.com